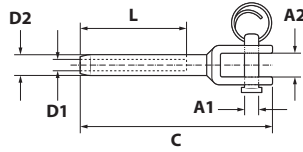


**TERMINAL PRENSABLE HORQUILLA INOXIDABLE A-4 <sup>1</sup>**

STAINLESS STEEL AISI 316 FORK TERMINALS  
 EMBOUTS À CHAPE A SERTIR EN ACIER INOX. A-4  
 GESCHWEISSTE GABELTERMINALS ZUM WALZEN AUS ROSTFREIEM STAHL



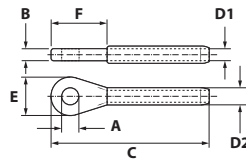
CAJA / BOX / BOÎTE

**INOX. A-4 / S.S. AISI 316**

CÓDIGO Code / Code	Ø CABLE Rope Ø / Ø Cable	D1	D2	L	A1	A2	C	PESO Weight / Poids	
	m.m.	m.m.	m.m.	m.m.	m.m.	m.m.	m.m.	Kg.	
THPA404	<b>4</b>	4,3	7,5	49	6	11	80	0,05	1
THPA405	<b>5</b>	5,3	9,0	52	8	12	95	0,06	1
THPA406	<b>6</b>	6,4	12,9	63	9	14	117	0,13	1
THPA408	<b>8</b>	8,4	16,0	85	12	17	159	0,23	1
THPA410	<b>10</b>	10,5	18,0	90	16	20	166	0,33	1
THPA412	<b>12</b>	12,5	20,0	105	16	23	213	0,52	1

**TERMINAL PRENSABLE OJO INOXIDABLE A-4 <sup>1</sup>**

STAINLESS STEEL AISI 316 EYE TERMINAL  
 EMBOUTS À OEIL A SERTIR EN ACIER INOX. A-4  
 AUGENTERMINALS ZUM WALZEN AUS ROSTFREIEM STAHL



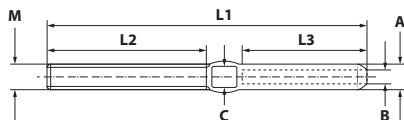
CAJA / BOX / BOÎTE

**INOX. A-4 / S.S. AISI 316**

CÓDIGO Code / Code	Ø CABLE Rope Ø / Ø Cable	D1	D2	A	B	C	E	F	PESO Weight / Poids	
	m.m.	m.m.	m.m.	m.m.	m.m.	m.m.	m.m.	m.m.	Kg.	
TOA404	<b>4</b>	4,3	7,5	8,0	5	70	17	16,5	0,02	1
TOA405	<b>5</b>	5,3	9,1	10,0	7	92	22	28,0	0,04	1
TOA406	<b>6</b>	6,4	12,5	12,0	8	120	28	34,0	0,10	1
TOA408	<b>8</b>	8,4	16,1	14,5	10	140	32	40,0	0,19	1
TOA410	<b>10</b>	10,5	18,0	16,0	12	162	36	48,0	0,28	1
TOA412	<b>12</b>	12,6	20,0	18,0	16	180	40	55,0	0,38	1

**TERMINAL PRENSABLE INOXIDABLE A-4 <sup>1</sup>**

STAINLESS STEEL AISI 316 SWAGE STUDS  
 EMBOUTS À SERTIR EN ACIER INOX. A-4  
 TERMINAL ZUM WALZEN AUS ROSTFREIEM STAHL



CAJA / BOX / BOÎTE

**INOX. A-4 / S.S. AISI 316**

CÓDIGO Code / Code	MEDIDA Measure / Mesure	Ø CABLE Rope Ø / Ø Cable	L1	L2	L3	A	B	C	PESO Weight / Poids	
	M	m.m.	m.m.	m.m.	m.m.	m.m.	m.m.	m.m.	Kg.	
TPA406	<b>6</b>	<b>3</b>	100	39	48	6,3	3,3	5,0	0,03	1
TPA408	<b>8</b>	<b>4</b>	117	45	57	7,5	4,3	5,9	0,07	1
TPA410	<b>10</b>	<b>5</b>	130	51	63	9,0	5,3	6,9	0,08	1
TPA412	<b>12</b>	<b>6</b>	162	64	80	12,5	6,3	10,8	0,11	1